

Residential Full Line Brochure

Updated: 3/13



*Quality You Can Trust...From
North America's Largest Roofing Manufacturer!™*



RESIDENTIAL ROOFING GUIDE

The One-Stop Guide To North America's #1-Selling Roofing Products

A woman in a long, flowing red dress stands on a dark rock in the foreground. The background features a large, ornate, multi-story house with a complex roof structure, including multiple gables and a turret. The house is set against a dramatic, cloudy sky. In the foreground, there are several large, dark, textured tiles, likely representing the roofing product being advertised, partially submerged in water with white foam from waves crashing around them.

**Introducing
Sienna™ Lifetime
Designer Shingles**

Affordable Old World Elegance!
See Pages 12-13

**Get Special Warranty
Protection For Your
New Roof!**

Only From GAF
See Pages 2-3

Table Of Contents

GAF Lifetime Roofing System 2-43

Lifetime Shingles	4-37
Ultra-Premium Collection	
Lifetime Designer Shingles	6-11
Camelot®	6
Grand Canyon®	8
Country Mansion®	10
Value Collection	
Lifetime Designer Shingles	12-25
Sienna™	12
Woodland®	14
Monaco®	16
Camelot® II	18
Country Mansion® II	20
Grand Sequoia®	22
Slateline®	24
Timberline® Lifetime Shingles	26-37
Timberline® High Definition®	26
Timberline® American Harvest®	32
Timberline® Natural Shadow®	34
Specialty Lifetime Shingles	36-37
Timberline® Cool Series	36
Grand Sequoia® IR	37
Timberline® ArmorShield™ II	37
Lifetime Roofing System Accessories	38-43
Roof Deck Protection	38
Cobra® Attic Ventilation	40
Waterproof Leak Barriers	41
Eave/Rake Starter Strips	41
Ridge Cap Shingles	42

Other GAF

Roofing Products 44-51

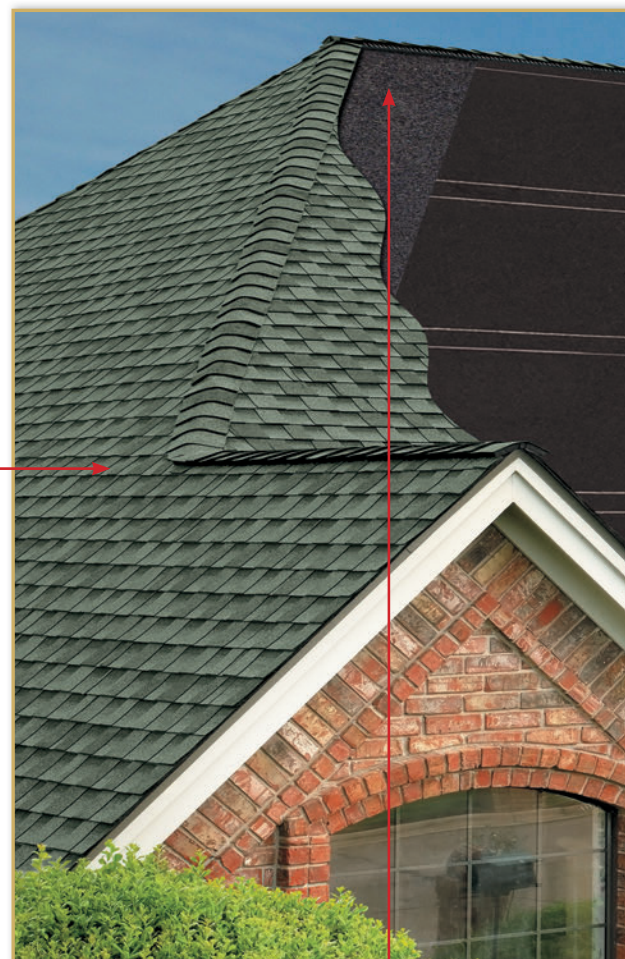
Three-Tab Shingles	44
Master Flow® Ventilation Products	47
WeatherSide™ Fiber-Cement Siding	47
Shingle Specifications	48
ShingleMatch™ Accessory Paint	49
Liberty™ Low-Slope Roofing	50
TruSlate® Genuine Slate Roofing	50-51



Only From GAF!

Get **LIFETIME**
Your Entire GAF

A new roof is more than just shingles. When you install any GAF Lifetime Shingle and at least 3 qualifying accessories, you'll get a Lifetime Ltd.



Lifetime Shingles



GAF offers you many great Lifetime Shingle choices, including **Timberline®** Shingles with Advanced Protection® Technology. They're the #1-selling shingles in North America!

Advanced Protection® Technology results in superior protection for your home, while reducing the use of precious natural resources. That's better for your home—and better for the environment!

To learn more about why Advanced Protection® Shingles are your best choice, visit www.gaf.com/aps.

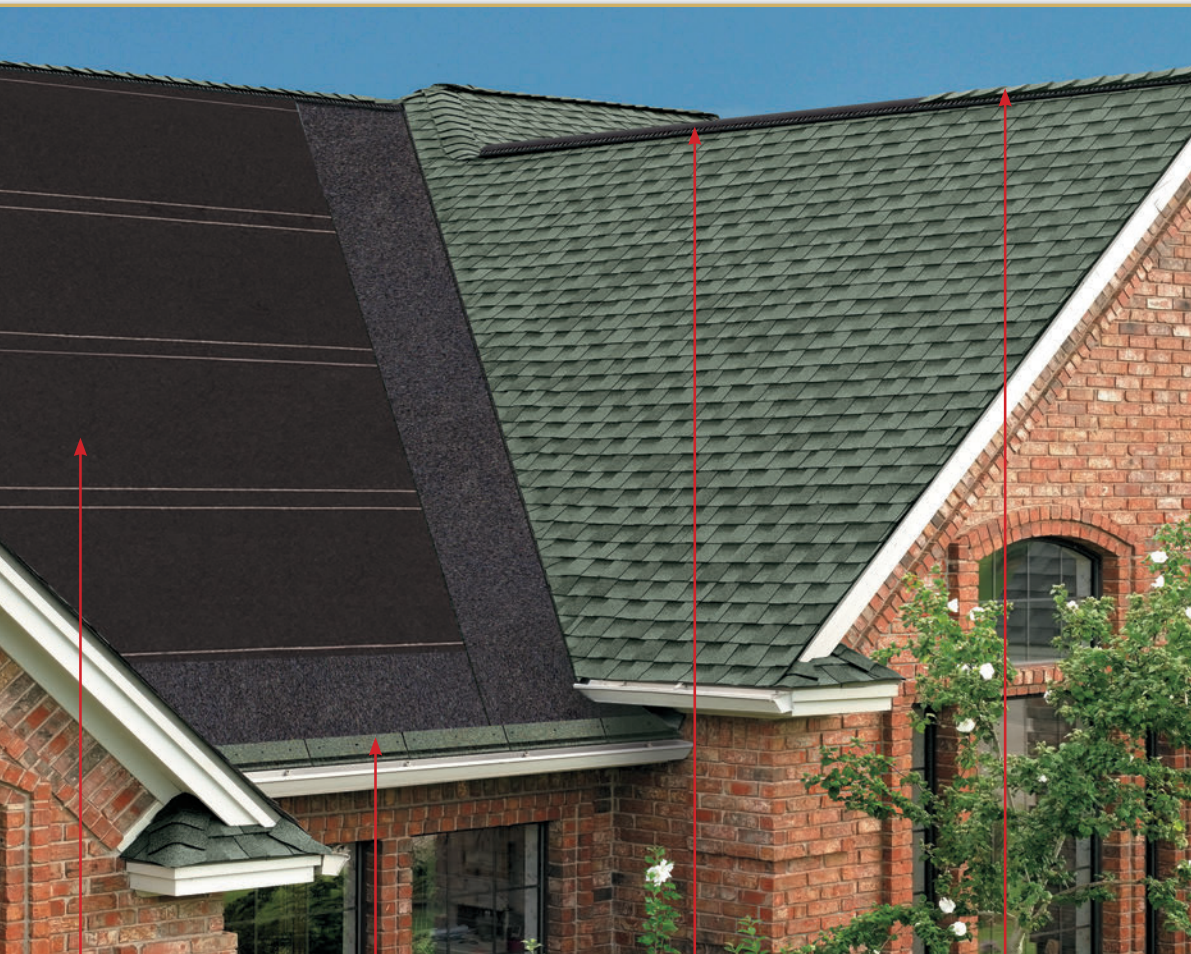


Leak Barrier

Provides exceptional protection against leaks caused by roof settling and extreme weather. Ideal upgrade at all vulnerable areas (including at the eaves in the North*).

PROTECTION On Roofing System — At No Additional Cost!

warranty on your shingles and all qualifying GAF accessories—at no additional cost.† Why settle for anything less?



GAF

Roof Deck Protection

Allows moisture to escape from your attic while providing an exceptionally strong layer of protection against wind-driven rain. Also, lays flatter for a better-looking roof.

GAF

Starter Strip Shingles

Saves time, eliminates waste, and reduces the risk of blow-off...and may even help qualify for upgraded wind warranty coverage (see *GAF Shingle & Accessory Ltd. Warranty*† for details).

GAF

Cobra® Attic Ventilation

Helps remove excess heat and moisture from your attic that can raise your energy bills, cause premature peeling of interior paint and wall-paper, and even affect your health.

GAF

Ridge Cap Shingles

Enhances the beauty and value of your home—while guarding against leaks at the hips and ridges.



The GAF Lifetime Roofing System has earned the prestigious Good Housekeeping Seal, which means that Good Housekeeping stands behind the products in this system. (Refer to Good Housekeeping Magazine for its consumer protection policy.)



*In the North, building codes require the use of Leak Barrier at the eaves.

†See *GAF Shingle & Accessory Ltd. Warranty* for complete coverage and restrictions. The word "Lifetime" means as long as the original individual owner(s) of a single family detached residence (or the second owner(s) in certain circumstances) owns the property where the shingles and accessories are installed. For owners/structures not meeting above criteria, Lifetime coverage is not applicable. Lifetime Ltd. warranty on accessories requires the use of at least three qualifying GAF accessories and the use of Lifetime Shingles.



GAF Proudly Sponsors
"The All-American Home" Campaign
www.theallamericanhome.com

Choosing The Right **Lifetime** Shingle



If you're looking for a new roof, rest assured you've come to the right place. Not only do most GAF shingles offer a Lifetime ltd. warranty for peace of mind, but GAF's vast shingle offering means you're virtually certain to find the right combination of style, color, and price to suit your taste.*

Ultra-Premium Lifetime Designer Shingles

GAF's Ultra-Premium Lifetime Designer Shingles are our top-of-the-line asphalt shingles. They offer a variety of styles and colors to complement your home and to suit virtually any taste. These are the very best asphalt shingles you can buy!



PAGES 6-11

\$\$\$-\$\$\$\$

Value Collection Lifetime Designer Shingles

Now you can have the beauty and style of designer roofing—but at an incredibly affordable price. GAF's Value Collection Lifetime Designer Shingles offer an exceptionally wide array of designer styles and colors, but at prices only slightly more than a standard architectural shingle.



PAGES 12-25

\$\$\$

Timberline® Lifetime Shingles

Timberline® Shingles are the #1-selling shingles in North America. They offer the very best combination of performance and value that you can get for your home. Choose from High Definition®, Natural Shadow®, or American Harvest® Shingles, the newest addition to the Timberline® family.



PAGES 26-37

\$\$\$-\$\$\$\$

Specialty Lifetime Shingles

GAF offers shingles with special features, including our Timberline® Cool Series Shingles, which are ENERGY STAR® qualified (U.S. only), and our Grand Sequoia® IR Shingles and Timberline® ArmorShield™ II Shingles, which are Class IV impact resistant.



PAGE 36-37

\$\$\$-\$\$\$\$

* See footnote on next page

Lifetime Designer Shingles



Transform Your Home With GAF's Lifetime Designer Shingles!

Maximizing your property's "visual appeal" with a Lifetime Designer Shingle from GAF can be exciting, fun—and a smart investment.

Designer Style...

Whatever your preference, GAF's Lifetime Designer Shingles have become "the choice" of discerning property owners, designers, and architects. Our wide range of design choices includes shingles that emulate the rich look of natural materials like wood and slate.

Peace Of Mind...

GAF's Lifetime Designer Shingles far exceed industry performance standards—so it's no surprise that they include exceptional warranty protection. Every GAF Lifetime Designer Shingle is backed by a Lifetime Ltd. warranty, plus Smart Choice® Protection (non-prorated material and installation labor coverage) for the first ten years and 130 mph wind coverage.*†

Two Options To Fit Your Budget...

- **Ultra-Premium Collection**—Gives you the thickest, most dimensional look for your roof.
- **Value Collection**—Gives you a designer look for just pennies-a-day more than a standard architectural shingle.

All Of GAF's Lifetime Designer Shingles Offer You These Great Benefits:

- **Affordable Luxury...** GAF Lifetime Designer Shingles are only a fraction of the cost of traditional slate or wood shakes
- **Sophisticated Designs...** Artisan-crafted shapes combined with dimensional designs result in a sophisticated beauty unmatched by typical shingles
- **Custom Color Palettes...** Specially formulated color palettes are designed to accentuate each shingle's natural appeal
- **High Performance...** Designed with Advanced Protection® Technology, which minimizes the use of natural resources while providing superior protection for your home (visit www.gaf.com/aps to learn more)
- **StainGuard® Protection...** Helps assure the beauty of your roof against unsightly blue-green algae**
- **Safer...** Class A fire rating from Underwriters Laboratories—the highest rating possible—and safer than wood shakes or some plastic/synthetic shingles, which carry only a Class C fire rating!
- **Stays In Place...** Dura Grip™ Adhesive seals each shingle tightly and reduces the risk of shingle blow-off. Shingles warranted to withstand winds up to 130 mph!†
- **The Ultimate Peace Of Mind...** Lifetime Ltd. transferable warranty with Smart Choice® Protection (non-prorated material and installation labor coverage) for the first ten years*
- **Perfect Finishing Touch...** For the best look, use Timbertex® Premium Ridge Cap Shingles with StainGuard® Protection. In the West, use Ridglass® Premium Ridge Cap Shingles.



* See *GAF Shingle & Accessory Ltd. Warranty* for complete coverage and restrictions. The word "Lifetime" means as long as the original individual owner(s) of a single family detached residence [or the second owner(s) in certain circumstances] owns the property where the shingles are installed. For owners/structures not meeting above criteria, Lifetime coverage is not applicable.

** StainGuard® Protection is not available in all areas, or on Grand Sequoia® Shingles. See gaf.com for availability and details.

† This wind speed coverage requires special installation. See *GAF Shingle & Accessory Ltd. Warranty* for details.

Note: It is difficult to reproduce the color clarity and actual color blends of these products. Before selecting your color, please ask to see several full-size shingles.



CAMELOT[®]

LIFETIME *Designer* SHINGLES

Color Shown:
San Gabriel

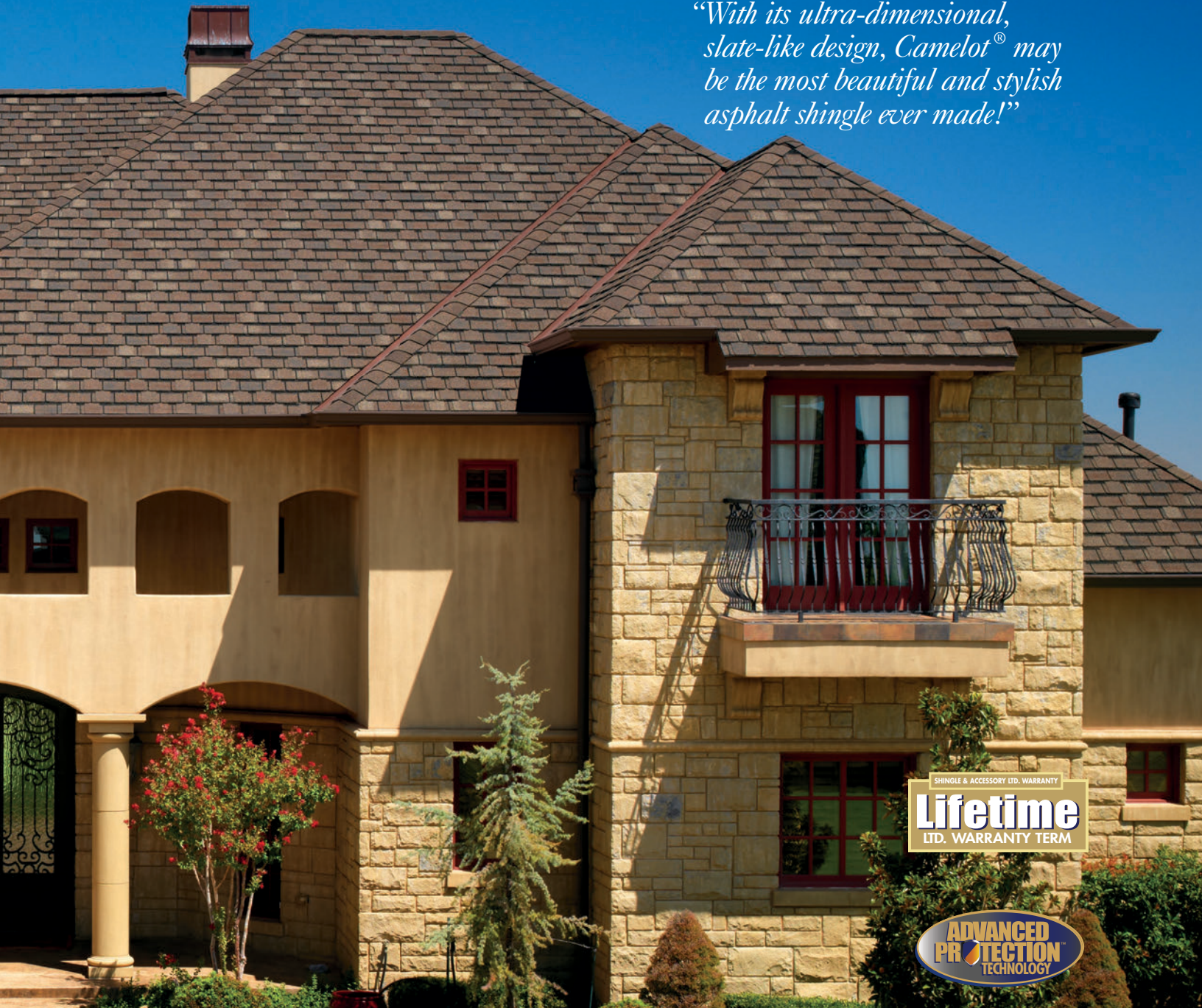


Note: It is difficult to reproduce the color clarity and actual color blends of these products. Before selecting your color, please ask to see several full-size shingles.



Timeless Beauty...Uncompromising Performance

“With its ultra-dimensional, slate-like design, Camelot® may be the most beautiful and stylish asphalt shingle ever made!”



SHINGLE & ACCESSORY LTD. WARRANTY
Lifetime
LTD. WARRANTY TERM

ADVANCED PROTECTION TECHNOLOGY

LIMITED WARRANTY TO CONSUMER
GOOD HOUSEKEEPING
Since 1909
REPLACEMENT - AROUND IF DEFECTIVE



Stain Guard
ALGAE DISCOLORATION LIMITED WARRANTY

Grand Canyon®

LIFETIME *Designer* SHINGLES

“The incredible depth and dimension of Grand Canyon® Shingles will astound even the most casual observer!”

Storm Cloud Gray



Moss Green



Mission Brown



Sedona Sunset



Black Oak



Stone Wood



Note: It is difficult to reproduce the color clarity and actual color blends of these products. Before selecting your color, please ask to see several full-size shingles.



The Ultimate Choice For A Rugged Wood-Shake Look



Color Shown
Mission Brown

SHINGLE & ACCESSORY LTD. WARRANTY
Lifetime
LTD. WARRANTY TERM

ADVANCED PROTECTION
TECHNOLOGY

LIMITED WARRANTY IS CONSUMER'S
GOOD HOUSEKEEPING
Since 1909
REPLACEMENT • REFUND • OR DISCOUNT

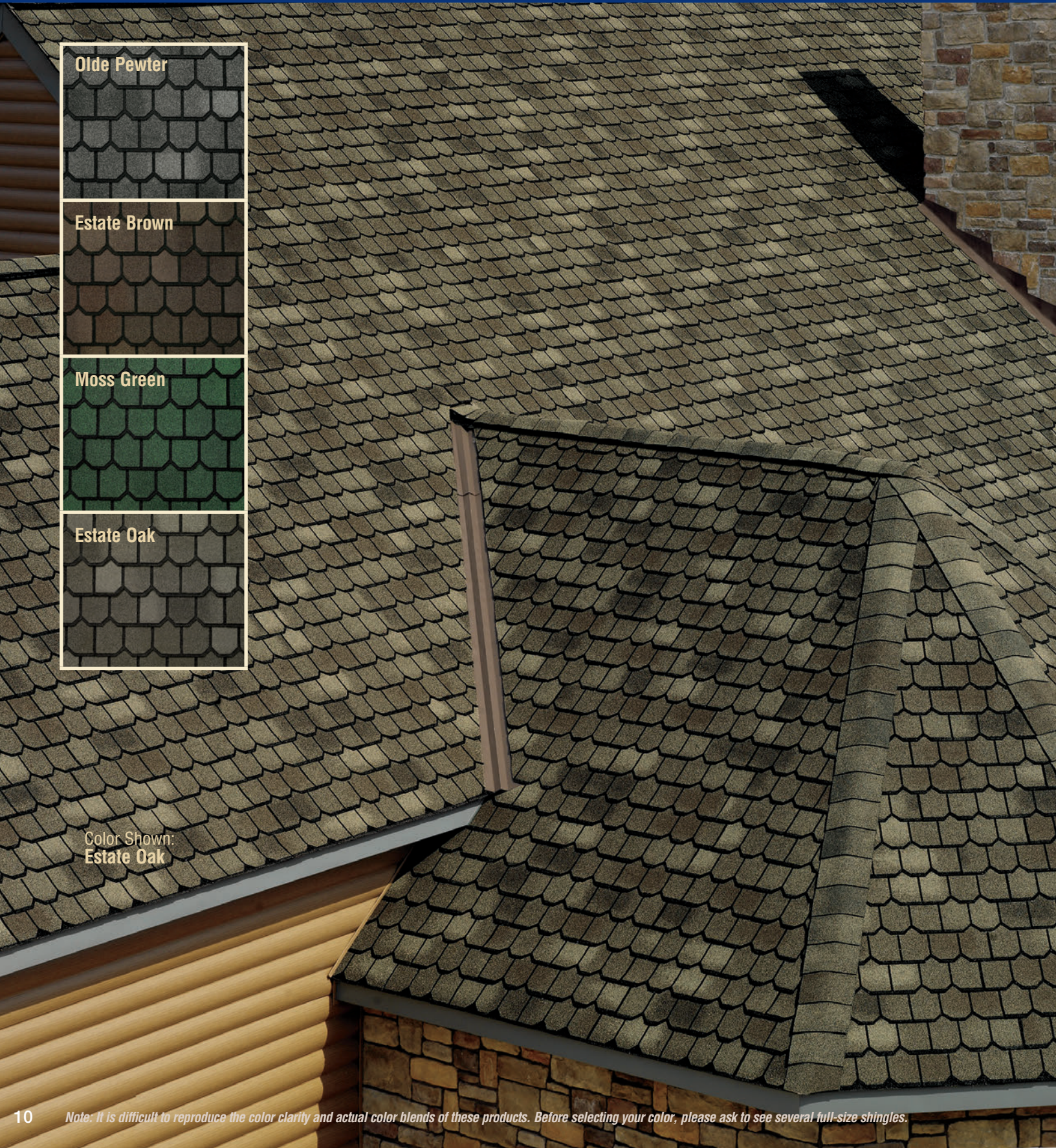
Stain Guard
ALGAE DISCOLORATION
LIMITED WARRANTY

CountryMansion®

LIFETIME *Designer* SHINGLES



Color Shown:
Estate Oak





The Look And Charm Of Hand-Crafted Slate



“Scalloped, ultra-dimensional design creates a charming, Victorian look.”

SHINGLE & ACCESSORY LTD. WARRANTY
Lifetime
LTD. WARRANTY TERM

ADVANCED PROTECTION TECHNOLOGY

LIMITED WARRANTY IN CONFORMANCE WITH
GOOD HOUSEKEEPING
Since 1909

Stain Guard
ALGAE DISCOLORATION LIMITED WARRANTY

Introducing... **Sienna™**
LIFETIME *Designer* SHINGLES

Heirloom Brown

Chateau Gray

Harbor Mist

Aged Oak

“Sienna™ Shingles offer a unique diamond shape and stylish color palette that is designed to complement virtually any exterior color scheme.”

Note: It is difficult to reproduce the color clarity and actual color blends of these products. Before selecting your color, please ask to see several full-size shingles.



Classic Old World Elegance...
At An Incredibly Affordable Price



Color Shown:
Heirloom Brown

SHINGLE & ACCESSORY LTD. WARRANTY
Lifetime
LTD. WARRANTY TERM

ADVANCED PROTECTION TECHNOLOGY

LIMITED WARRANTY IN CONFORMANCE WITH
GOOD HOUSEKEEPING
Since 1909
REPLACEMENT OR REFUND IF DEFECTIVE

Stain Guard
ALGAE DISCOLORATION
LIMITED WARRANTY

Woodland[®]

LIFETIME *Designer* SHINGLES

Cedarwood Abbey



Canterbury Black



Tuscan Sunset



Woodberry Brown



Castlewood Gray



“Woodland[®] Shingles combine rustic charm with 21st-century style to make your home look spectacular.”



Note: It is difficult to reproduce the color clarity and actual color blends of these products. Before selecting your color, please ask to see several full-size shingles.



The Stylish Look Of Hand-Cut European Shingles... At An Incredibly Affordable Price



Color Shown:
Cedarwood Abbey

SHINGLE & ACCESSORY LTD. WARRANTY
Lifetime
LTD. WARRANTY TERM

ADVANCED PROTECTION TECHNOLOGY

LIMITED WARRANTY TO CONSUMERS
GOOD HOUSEKEEPING
Since 1909
REPLACEMENT OR REFUND IF DEFECTIVE

Stain Guard
ALGAE DISCOLORATION
LIMITED WARRANTY

MONACO[®]

LIFETIME *Designer* SHINGLES



Castillian Surf



Venetian Coral



Amalfi Gray



Valencia Sunset



Monticello Brown

“Designed after classic premium tile roofing, Monaco[®] Lifetime Designer Shingles combine beauty and sophistication without the hassles associated with tile.”

Note: It is difficult to reproduce the color clarity and actual color blends of these products. Before selecting your color, please ask to see several full-size shingles.



The Look Of Genuine European Tile... At An Incredibly Affordable Price

Color Shown:
Monticello Brown



SHINGLE & ACCESSORY LTD. WARRANTY
Lifetime
LTD. WARRANTY TERM

ADVANCED PROTECTION
TECHNOLOGY

LIMITED WARRANTY IS CONSUMER'S
GOOD HOUSEKEEPING
Since 1909
REPLACEMENT • REFUND • DEFECTS

Stain Guard
ALGAE DISCOLORATION
LIMITED WARRANTY

CAMELOT® II

LIFETIME *Designer* SHINGLES

“With their dimensional appearance and slate-like design, Camelot® II Shingles provide style and beauty at an affordable price!”

Weathered Wood

Antique Slate

Charcoal

Shakewood

Barkwood





The Beauty Of GAF's Original Camelot® Shingle... At An Incredibly Affordable Price



Color Shown:
Weathered Wood

SHINGLE & ACCESSORY LTD. WARRANTY
Lifetime
LTD. WARRANTY TERM

ADVANCED
PROTECTION
TECHNOLOGY

LIMITED WARRANTY TO CONSUMERS
GOOD
HOUSEKEEPING
Since 1989
REPLACEMENT OR REFUND IF DEFECTIVE

Stain
Guard
ALGAE DISCOLORATION
LIMITED WARRANTY

CountryMansion® II

LIFETIME *Designer* SHINGLES



Color Shown:
Weathered Wood



The Beauty Of GAF's Original Country Mansion® Shingle...
At An Incredibly Affordable Price

“Country Mansion® II Shingles offer the look of hand-crafted slate with a chic and stylish color palette, but at an incredibly affordable price!”



Note: Shingle not available in all areas. See gaf.com for regional availability.

GRAND SEQUOIA®

LIFETIME *Designer* SHINGLES

Cedar

Charcoal

Weathered Wood

Mesa Brown

Autumn Brown

Slate



Note: It is difficult to reproduce the color clarity and actual color blends of these products. Before selecting your color, please ask to see several full-size shingles.



Great Value For A Rugged Wood-Shake Look

“Extra-large design with over-sized tabs creates a realistic wood-shake look—at a fraction of the cost!”

Color Shown:
Mesa Brown

SHINGLE & ACCESSORY LTD. WARRANTY
Lifetime
LTD. WARRANTY TERM

ADVANCED PROTECTION TECHNOLOGY

LIMITED WARRANTY IS CONSUMER'S
GOOD HOUSEKEEPING
Since 1909
REPLACEMENT OR REFUND IF DEFECTIVE

Note: Shingle not available in all areas. See gaf.com for regional availability.

SLATELINE®

LIFETIME *Designer* SHINGLES

Antique Slate

(less contrast than English Gray)

English Gray

(more contrast than Antique Slate)

Emerald Green

Mariner Blue

Victorian Red

Weathered Slate

Note: It is difficult to reproduce the color clarity and actual color blends of these products. Before selecting your color, please ask to see several full-size shingles.





The Look Of Slate... At A Fraction Of The Cost

“Bold shadow lines and tapered cut-outs create the appearance of depth and dimension.”



Color Shown:
Antique Slate

TIMBERLINE[®]
LIFETIME HIGH DEFINITION[®] SHINGLES

"North America's
#1-Selling Shingle!"



"There's nothing quite like a genuine **Timberline[®] High Definition[®]** roof!"

Your roof can represent **40% or more** of your home's "curb appeal." Now, you can improve its resale value with Timberline[®] High Definition[®] Shingles from GAF.

Timberline[®] Shingles with Advanced Protection[®] Technology are the **#1-selling shingles** in all of North America. Professional installers have long preferred the rugged, dependable performance that only a Timberline[®] roof can offer.



SHINGLE & ACCESSORY LTD. WARRANTY
Lifetime
 LTD. WARRANTY TERM



But great performance is only half the story. Timberline® High Definition® Shingles not only protect your most valuable asset but also beautify your home for years to come. In fact, an independent research firm surveyed homeowners about the brand of architectural shingles they preferred. The result: **more homeowners preferred the look of Timberline® High Definition® Shingles to the other leading brands!**

Why settle for anything less?

What's the **secret** to the striking look of a Timberline® High Definition® roof?

Timberline® High Definition® Shingles are unlike any others, thanks to our patented High Definition® shadow bands (U.S. Patent No. 5,666,776). Each shadow band is applied using a sophisticated, computer-controlled "feathering" technique. When combined with our randomly blended top layer, it results in a shingle with exceptional depth and dimension—and a **striking look unmatched by any other brand.**

But don't just take our word for it. See for yourself. When you compare Timberline® High Definition® Shingles to typical architectural shingles, it's easy to see why they'll look sharper and more beautiful on your roof—while enhancing the resale value of your home.

See the difference...

Timberline® High Definition® Shingles



Color Shown: Hickory

Another Major Brand



The color blends on Timberline® High Definition® Shingles (top) are sharp and well defined—to give your roof maximum dimensionality and depth.

TIMBERLINE ULTRA HD®

LIFETIME HIGH DEFINITION® SHINGLES

"Your Best Investment For
An **Ultra-Dimensional**
Wood-Shake Look"

for HOMEOWNERS

- **Best Investment...** Just pennies-a-day more than standard architectural shingles.¹
- **Ultra-Dimensional Look...** Up to 53% thicker,¹ Timberline Ultra HD® Shingles feature GAF's "High Definition" color blends and enhanced shadow effect for an ultra-dimensional wood-shake look on your roof.
- **Safer...** Class A fire rating from Underwriters Laboratories, the highest rating possible.
- **High Performance...** Designed with Advanced Protection® Technology, which minimizes the use of natural resources while providing superior protection for your home (visit www.gaf.com/aps to learn more).
- **Stays In Place...** Dura Grip™ Adhesive seals each shingle tightly and reduces the risk of shingle blow-off. Shingles are warranted to withstand winds up to 130 mph.²
- **Peace Of Mind...** Lifetime Ltd. transferable warranty with Smart Choice® Protection (non-prorated material and installation labor coverage) for the first ten years.³
- **Perfect Finishing Touch...** Use Timbertex® Premium Ridge Cap Shingles (in the West, use Ridglass® Premium Ridge Cap Shingles).

for PROFESSIONALS

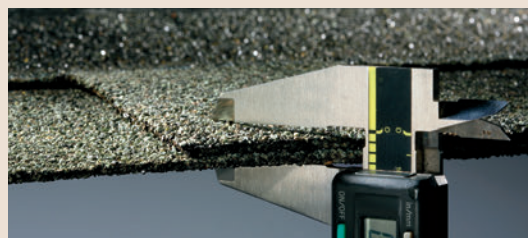
- **More Referrals...** People will know that you're installing America's #1-selling laminated shingles!
- **Less Chance of Call-Backs...** Durable, wind-resistant shingles include 130 mph ltd. wind coverage!²

¹ Note: Comparison refers to Timberline HD® Shingles. Thickness varies by plant; see actual shingles for comparison.

² This wind speed coverage requires special installation; see GAF Shingle & Accessory Ltd. Warranty for details.

³ See GAF Shingle & Accessory Ltd. Warranty for complete coverage and restrictions. The word "Lifetime" means as long as the original individual owner(s) of a single family detached residence [or the second owner(s) in certain circumstances] owns the property where the shingles are installed. For owners/structures not meeting above criteria, Lifetime coverage is not applicable.

Color Shown:
Slate



Extrathick layers make Timberline Ultra HD® Shingles up to 53% thicker than standard architectural shingles—for a natural dimensional beauty that you'll notice and appreciate.*

*Note: Comparison refers to Timberline HD® Shingles. Thickness varies by plant; see actual shingles for comparison.





TIMBERLINE HD
LIFETIME HIGH DEFINITION SHINGLES

"Value And Performance In A Genuine Wood-Shake Look"



Color Shown:
Weathered Wood

for HOMEOWNERS

- **Great Value...** Architecturally stylish but practically priced—with a Lifetime Ltd. warranty.
- **Dimensional Look...** Features GAF's "High Definition" color blends and enhanced shadow effect for a genuine wood-shake look.
- **Safer...** Class A fire rating from Underwriters Laboratories, the highest rating possible.
- **High Performance...** Designed with Advanced Protection® Technology, which minimizes the use of natural resources while providing superior protection for your home (visit www.gaf.com/aps to learn more).
- **Stays In Place...** Dura Grip™ Adhesive seals each shingle tightly and reduces the risk of shingle blow-off. Shingles are warranted to withstand winds up to 130 mph.¹
- **Peace Of Mind...** Lifetime Ltd. transferable warranty with Smart Choice® Protection (non-prorated material and installation labor coverage) for the first ten years.²
- **Perfect Finishing Touch...** Use Timbertex® Premium Ridge Cap Shingles (in the West, use Ridglass® Premium Ridge Cap Shingles).

for PROFESSIONALS

- **More Referrals...** People will know that you're installing America's #1-selling laminated shingles!
- **Less Chance of Call-Backs...** Durable, wind-resistant shingles include 130 mph ltd. wind coverage!¹

¹ This wind speed coverage requires special installation; see *GAF Shingle & Accessory Ltd. Warranty* for details.

² See *GAF Shingle & Accessory Ltd. Warranty* for complete coverage and restrictions. The word "Lifetime" means as long as the original individual owner(s) of a single family detached residence [or the second owner(s) in certain circumstances] owns the property where the shingles are installed. For owners/structures not meeting above criteria, Lifetime coverage is not applicable.



TIMBERLINE®

LIFETIME HIGH DEFINITION® SHINGLES

Most Popular High Definition® Colors (Available nationwide)



Barkwood



Charcoal



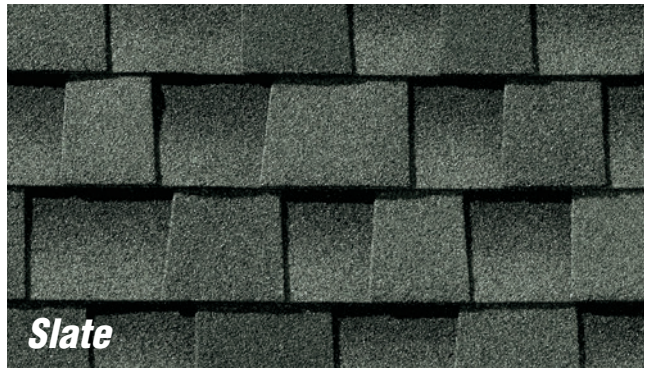
Hickory



Hunter Green



Shakewood



Slate



Weathered Wood



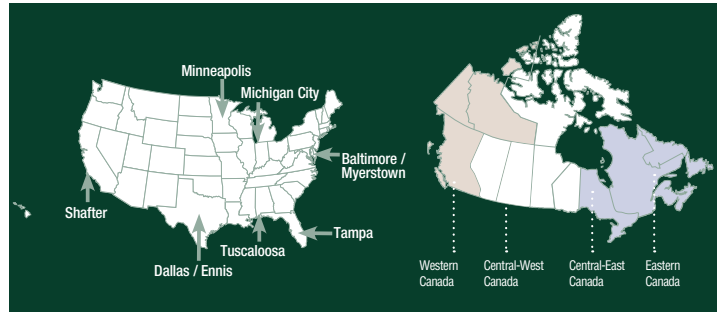
Note: StainGuard® Protection available in most areas

Note: It is difficult to reproduce the color clarity and actual color blends of the shingles in this catalog. Before selecting your color, please ask to see several full-size shingles.



High Definition® Colors/Availability

Regional High Definition® Colors (See chart below for availability)



Availability

Color Key:	
● - Timberline HD®	▲ - Timberline Ultra HD®

	Ask your contractor which of these GAF plants supplies the shingles in your area...										
	Baltimore/Myerstown MD	Dallas/Ennis TX	Michigan City IN	Minneapolis MN	Shafter CA	Tampa FL	Tuscaloosa AL	Western Canada	Central-West Canada	Central-East Canada	Eastern Canada
Most Popular Colors:											
Barkwood	●▲	●▲	●▲	●▲	●▲	●▲	●▲	●▲	●▲	●▲	●▲
Charcoal	●	●	●	●	●	●	●	●	●	●	●
Hickory	●	●	●	●	●	●	●	●	●	●	●
Hunter Green	●	●	●	●	●	●	●	●	●	●	●
Shakewood	●	●	●	●	●	●	●	●	●	●	●
Slate	●	●	●	●	●	●	●	●	●	●	●
Weathered Wood	●	●	●	●	●	●	●	●	●	●	●
Regional Colors:											
Birchwood			●	●	●▲	●	●	●▲	●	●	
Biscayne Blue	●▲										▲
Canadian Driftwood								●	●	●	●
Copper Canyon					●▲			▲			
Driftwood						●▲	●				
Fox Hollow Gray	●▲		●	●							▲
Mission Brown	●	●	●	●	●▲			●▲	●	●	●
Oyster Gray	●										
Patriot Red	●▲		▲								▲
Pewter Gray	●▲	●	●▲	●▲			●▲	●	●▲	●▲	●▲
Sienna Sunset						▲					
Sunset Brick						●▲					
White ¹						●	●				
Williamsburg Slate	●		●								

¹Timberline HD® White is ENERGY STAR® qualified (U.S. only) and listed with the Cool Roof Rating Council (CRRC). See gaf.com for availability and details.

TIMBERLINE[®] American Harvest[®]

LIFETIME SHINGLES

Designed to complement your home's exterior color scheme, the American Harvest[®] Collection will give you that modern architectural style you want, at a price you can afford!

Our new color palette combines subtle blends with contrasting colors to give your roof unexpected depth and beauty.

- **Custom-Designed Color Palette...** Specially designed to complement your home's exterior style. Subtle blends with contrasting colors will increase your roof's dimensionality.
- **Extra-Dimensional...** Optimized construction and advanced color application techniques result in an extra-dimensional look.
- **Great Value...** Architecturally stylish, but practically priced—with a Lifetime Ltd. warranty.
- **Safer...** Class A fire rating from Underwriters Laboratories, the highest rating possible.
- **High Performance...** Designed with Advanced Protection[®] Technology, which minimizes the use of natural resources while providing superior protection for your home (visit www.gaf.com/aps to learn more).
- **Stays In Place...** Dura Grip[™] Adhesive seals each shingle tightly and reduces the risk of shingle blow-off. Shingles warranted to withstand winds up to 130 mph.[†]
- **Peace Of Mind...** Lifetime Ltd. transferable warranty with Smart Choice[®] Protection (non-prorated material and installation labor coverage) for the first ten years.*
- **Perfect Finishing Touch...** Use Timbertex[®] Premium Ridge Cap Shingles (in the West, use Ridglass[®] Premium Ridge Cap Shingles).

* See GAF Shingle & Accessory Ltd. Warranty for complete coverage and restrictions. The word "Lifetime" means as long as the original individual owner(s) of a single family detached residence [or the second owner(s) in certain circumstances] owns the property where the shingles are installed. For owners/structures not meeting above criteria, Lifetime coverage is not applicable.

† This wind speed coverage requires special installation; see GAF Shingle & Accessory Ltd. Warranty for details.



"Colors From The Heartland Of America"



Color Shown:
Cedar Falls



TIMBERLINE[®] Natural Shadow[®]

LIFETIME SHINGLES

(Not available in Canada)

Color Shown:
Weathered Wood

for HOMEOWNERS

- **Attractive Appearance...** Features the classic Natural Shadow[®] effect. Lends any home a subtle, even-toned look with the warmth of wood.
- **Good Value...** Architecturally stylish, but practically priced.
- **High Performance...** Designed with Advanced Protection[®] Technology, which minimizes the use of natural resources while providing superior protection for your home (visit www.gaf.com/aps to learn more).
- **Safer...** Class A fire rating from Underwriters Laboratories, the highest rating possible.
- **Stays In Place...** Dura Grip[™] Adhesive seals each shingle tightly and reduces the risk of shingle blow-off. Shingles are warranted to withstand winds up to 130 mph.¹
- **Peace Of Mind...** Lifetime Ltd. transferable warranty with Smart Choice[®] Protection (non-prorated material and installation labor coverage) for the first ten years.²
- **Perfect Finishing Touch...** Use Timbertex[®] Premium Ridge Cap Shingles (in the West, use Ridglass[®] Premium Ridge Cap Shingles).



Note: StainGuard[®] Protection available in most areas

for PROFESSIONALS

- **More Referrals...** People will know that you're installing America's #1-selling laminated shingles!
- **Less Chance of Call-Backs...** Durable, wind-resistant shingles include 130 mph ltd. wind coverage!¹

¹ This wind speed coverage requires special installation; see GAF Shingle & Accessory Ltd. Warranty for details.

² See GAF Shingle & Accessory Ltd. Warranty for complete coverage and restrictions. The word "Lifetime" means as long as the original individual owner(s) of a single family detached residence (or the second owner(s) in certain circumstances) owns the property where the shingles are installed. For owners/structures not meeting above criteria, Lifetime coverage is not applicable.

Note: It is difficult to reproduce the color clarity and actual color blends of these products. Before selecting your color, please ask to see several full-size shingles.

“Value & Performance In A Natural Wood-Shake Look”



Colors

<p>ENERGY STAR® QUALIFIED! (Arctic White Only)¹</p>   <p>Arctic White</p>	 <p>Barkwood</p>
 <p>Charcoal</p>	 <p>Hickory</p>
 <p>Hunter Green</p>	 <p>Pewter Gray</p>
 <p>Shakewood</p>	 <p>Slate</p>
 <p>Weathered Wood</p>	<p>Notes:</p> <ul style="list-style-type: none"> • Pewter Gray only available in the Baltimore/ Myerstown and Michigan City areas. • Hunter Green only available in Minneapolis and Michigan City areas. • Arctic White only available in Shafter area. • Slate and Barkwood not available in Tampa area. <p>¹ENERGY STAR® Qualified (U.S. Only)</p>

We can help you choose the right shingle for your roof!

Try GAF's Virtual Home Remodeler at www.gaf.com. Visualize GAF shingles on a house like yours—or upload and decorate your own house. Try different siding, trim, and brick colors. It's fun!



TIMBERLINE®
COOLSERIES
 ENERGY-SAVING SHINGLES

“Revolutionary Energy Savings!”



Now get potential energy and cost savings when you install GAF Timberline® Cool Series Shingles

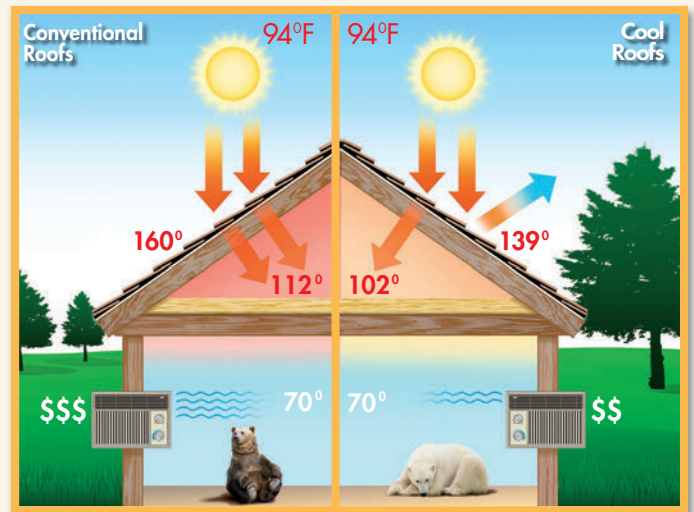
The revolutionary Cool Series Shingles reflect sunlight to reduce unwanted attic heat build-up—to save energy. They are rated by the Cool Roof Rating Council (CRRC) and are ENERGY STAR® qualified (U.S. Only).^{1,2}

- **Lower Cooling Costs...** Cool roofs may save an average of 7–15% on total cooling costs, depending on geography, structure, and climate. In warmer climates, cooling-cost savings may be greater year round.³
- **Cash Rebates and Tax Credits...** Timberline® Cool Series Shingles may qualify for utility rebates or governmental tax credits in some areas.⁴

Timberline® Cool Series Shingles are stocked in Fontana, CA and Shafter, CA and are special order in other locations.

¹ All three Cool Colors meet the prescriptive requirements of California TITLE 24, Part 6 for Cool Steep Slope Roofing.
² When installed properly, this product will help reduce energy costs. Actual savings will vary based on geographic location and individual building characteristics. For more information, contact GAF Technical Services at 1-800-ROOF-411, visit www.gaf.com, or call 1-888-STAR-YES.
³ According to the Cool Roof Rating Council.
⁴ Some rebate programs and other incentives are time limited and change often; for more information, contact your utility, governmental unit, or tax advisor.
 Note: See GAF Shingle & Accessory Ltd. Warranty for complete coverage and restrictions. The word “Lifetime” means as long as the original individual owner(s) of a single family detached residence (or the second owner(s) in certain circumstances) owns the property where the shingles are installed. For owners/structures not meeting above criteria, Lifetime coverage is not applicable.

It's sooo cool!†



Thanks to the reflective nature of the Cool Series Shingles, part of the heat radiating from the sun gets reflected, reducing the heat in the attic and heat going into the house. It may translate into substantial savings in air conditioning bills.

†Results may vary by geography, season, and property.

TIMBERLINE®
COOL SERIES
REFLECTANCE & EMITTANCE DATA

Color	Initial Solar Reflectance	Thermal Emittance	Solar Reflectance Index (SRI)	LEED Credits
Cool Antique Slate	0.27	0.92	29	YES
Cool Barkwood	0.27	0.92	29	YES
Cool Weathered Wood	0.26	0.92	28	NO

Note: It is difficult to reproduce the color clarity and actual color blends of the shingles in this catalog. Before selecting your color, please ask to see several full-size shingles.





IMPACT-RESISTANT SHINGLES



"Get Potential Insurance Savings And Extra Protection For Your Most Valuable Asset!"



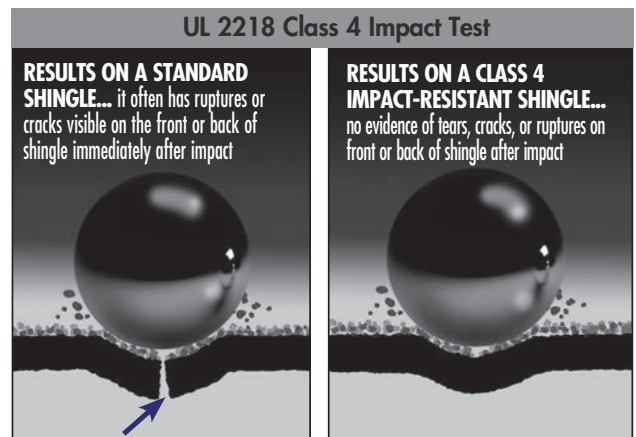
Impact-Resistant Shingles

Get Potential Insurance Savings And Extra Protection For Your Most Valuable Asset!

- **Potential Insurance Savings...** Passes UL 2218 Class 4, and may qualify for insurance discounts of 5 to 30% or more annually (check with your insurance agent)
- **Superior Wind Performance...** Shingles are warranted to withstand maximum wind gusts of up to 130 mph*
- **Peace Of Mind...** Lifetime Ltd. transferable warranty with Smart Choice® Protection for the first 10 years**
- **Exceptional Protection...** Design includes an SBS modified asphalt formula for rubber-like flexibility and maximum impact resistance
- **Ridge Cap Shingles...** For maximum insurance savings, use our Seal-A-Ridge® IR, UL 2218 Class 4 Ridge Cap Shingles (for use with Grand Sequoia® IR Shingles only) or Seal-A-Ridge® ArmorShield™, UL 2218 Class 4 Ridge Cap Shingles (for use with Timberline® ArmorShield™ II Shingles only). They're also a unique color match to GAF Impact-Resistant Shingles.

GAF IR Shingles meet the highest impact-resistance rating...

The UL 2218 Impact Test was developed in conjunction with insurance industry leaders. It's based on dropping a 2" steel ball from 20' onto the top of a shingle to see whether the shingle cracks. GAF IR Shingles pass Class 4 (see illustration below)—the highest rating possible. Check with your insurance agent about potential savings on your homeowners insurance.



What you should also know about the UL 2218 impact test:

- **Forceful Impact...** The test simulates hailstorms impacting a roof at a speed of over 70 mph!
- **Potential Leaks...** Shingles that fail the impact test are more likely to allow water to leak into your home.
- **No warranty improvement...** GAF's warranty does not cover hail damage even for shingles that pass this test.



*This wind coverage requires special installation; see GAF Shingle & Accessory Ltd. Warranty for details.

**See GAF Shingle & Accessory Ltd. Warranty for complete coverage and restrictions. The word "Lifetime" means as long as the original individual owner(s) of a single family detached residence (or the second owner(s) in certain circumstances) owns the property where the shingles and accessories are installed. For owners/structures not meeting above criteria, Lifetime coverage is not applicable. Lifetime Ltd. warranty on accessories requires the use of at least three qualifying GAF accessories and the use of Lifetime Shingles.



Roof Deck Protection

DECKARMOR™ SHINGLE & ACCESSORY LTD. WARRANTY Lifetime LTD. WARRANTY TERM

Premium *Breathable* Roof Deck Protection

- **Revolutionary “Breathable” Technology...** Helps prevent inside moisture from becoming trapped within your roofing system—and possibly causing mold, mildew, and expensive structural damage.
- **Safer for Installers...** Specially designed surface helps provide excellent walkability for installers versus conventional felts or typical synthetic underlayments.
- **Premium Construction...** Exceptionally durable, non-asphaltic construction will not rot or become brittle (unlike conventional asphaltic felts, which can disintegrate over time).
- **Exceptionally Strong...** At least 600% (i.e., 7 times) stronger and about 1/3 the weight of standard #30 felt.¹
- **Looks Better...** Unlike conventional asphaltic felts, Deck-Armor™ resists wrinkling or buckling, so it lets your shingles lay flatter for a better-looking roof.
- **Peace of Mind...** Up to a Lifetime Ltd. warranty when installed on Lifetime Shingle roofs.[†]
- **Saves Labor...** Extra wide 54" roll installs up to 50% faster than traditional 36" wide felts.
- **Cooler to Work With...** Light-blue surface is cooler in hot weather than conventional black felts.
- **Durable...** Can withstand UV degradation for 180 days when left exposed.*
- **Lightweight...** Nearly 1/3 the weight of a roll of #30 felt.
- **Easier to Cut...** Spun-bound design is easier to cut than some other synthetic products.

¹ Trapezoidal tear strength per ASTM D4533.

SPECIFICATIONS

- UV-stabilized polypropylene construction
- Meets or exceeds the physical requirements of ASTM D226 and D4869
- Class A fire rating when used with UL Class A rated roof coverings
- Miami-Dade County and Florida Building Code approved
- ICC ES ESR-2808
- Approx: 10 squares/roll; length 222'; width 54"; 37 lbs. /roll (nominal)

Note: **Always** use plastic cap nails or staples with plastic caps to install Deck-Armor™ Roof Deck Protection.

[†]See GAF Shingle & Accessory Ltd. Warranty for complete coverage and restrictions. The word “Lifetime” means as long as the original individual owner(s) of a single family detached residence (or the second owner(s) in certain circumstances) owns the property where the shingles and accessories are installed. For owners/structures not meeting above criteria, Lifetime coverage is not applicable. Lifetime Ltd. warranty on accessories requires the use of at least three qualifying GAF accessories and the use of Lifetime Shingles.

*Note: 180-day UV exposure refers to standardized testing conducted to ensure the product will not physically degrade when exposed to UV. It is **NOT** related to the time frame that the product can hold out water, snow, or wind. While Deck-Armor™ Roof Deck Protection is water resistant, it is **NOT** waterproof. Deck-Armor™ Roof Deck Protection should **NOT** be utilized as a temporary roof to protect property or possessions.



Conventional organic felts can absorb moisture, causing severe buckling and wrinkling—and a terrible-looking roof



Deck-Armor™ Premium “Breathable” Roof Deck Protection resists moisture, so it lays flatter for a better-looking roof!



Deck-Armor™ “Out-breathes” the competition!



As measured on Mocon unit @ 23°C and 50% R.H.



TIGERPAW™



Roof Deck Protection

- **Safer for Installers...** Specially designed surface helps provide excellent walkability for installers versus conventional felts or typical synthetic underlayments.
- **Special Moisture-Control Design...** Helps remove nearly twice as much damaging moisture from your roof deck as the leading synthetic non-breathable underlayment.¹
- **Durable Construction...** Non-asphaltic, polypropylene construction will not rot or become brittle (unlike conventional felts, which can disintegrate over time).
- **Better-Looking Roof...** Tiger Paw™ Roof Deck Protection resists wrinkling and buckling that can “telegraph” through your roof shingles and detract from its finished appearance.
- **Peace of Mind...** Up to a Lifetime Ltd. warranty when installed on Lifetime Shingle roofs.[†]
- **Deck-Side Coating...** Anti-skid back coating helps improve walkability, while also helping to keep the roll stationary during installation.
- **Stronger...** Synthetic, non-woven construction provides at least 600% (i.e. 7 times) greater tear strength than standard #30 felt.²
- **Less Chance of Blow-Off...** Up to 147% higher nail pull-through strength than #30 felt helps keep the product in place.³
- **Convenient Size...** 10 square, 48" wide roll installs up to 33% faster than conventional felts.
- **Lightweight...** At 40 lbs, it's approximately 33% lighter than a roll of #30 felt.
- **Cooler to Work With...** Light-grey surface is cooler in hot weather than conventional black felts.
- **Versatile...** Can withstand UV degradation for 180 days, if necessary.*

¹ As per ASTM D570-modified.

² Trapezoidal tear strength per ASTM D4533.

³ Nail pull-through per ASTM D3642.

SPECIFICATIONS

- UV-stabilized polypropylene construction
- Meets or exceeds the physical requirements of ASTM D226 and D4869
- Class A fire rating when used with UL Class A rated roof coverings
- Miami-Dade County and Florida Building Code approved
- ICC ES ESR-3286
- Approx: 10 squares/roll; length 250'; width 48"; 40 lbs./roll (nominal)

Note: **Always** use plastic cap nails or staples with plastic caps to install Tiger Paw™ Roof Deck Protection.

*Note: 180-day UV exposure refers to standardized testing conducted to ensure the product will not physically degrade when exposed to UV. It is **NOT** related to the time frame that the product can hold out water, snow, or wind. While TigerPaw™ Roof Deck Protection is water resistant, it is **NOT** waterproof. TigerPaw™ Roof Deck Protection should **NOT** be utilized as a temporary roof to protect property or possessions.



Also Available:



SHINGLE-MATE®

Roof Deck Protection

(Available nationwide)

- Fiberglass reinforced, so it lays flatter for a better-looking roof
- UL Classified for use with GAF Class A asphalt shingles
- Miami-Dade County and Florida Building Code approved
- Meets the physical requirements of ASTM D226 and ASTM D4869
- Up to a Lifetime Ltd. warranty when installed on Lifetime Shingle roofs[†]
- Approx: 4 squares/roll (432 ft²); length 144"; width 36"; 30 lbs./roll



VERSASHIELD®

FIRE-RESISTANT ROOF DECK PROTECTION

(Available nationwide)

- The best protection against fire spread and penetration
- Fiberglass reinforced, so it lays flatter for a better-looking roof
- Will upgrade the UL fire classification of almost any type of roof (refer to UL Certifications Directory for actual assemblies)
- Meets or exceeds ASTM D146, D226 Type II, D828, D4869 Type IV, D6757 Type I or Type II
- Up to a Lifetime Ltd. warranty when installed on Lifetime Shingle roofs[†]
- Approx: 3.5 squares/roll (350 gross ft²); length 100"; width 42"; 52.5 lbs./roll
- Miami-Dade County and Florida Building Code approved
- ICC ES ESR-2053

ROOFPRO™

SBS-Modified All-Purpose Underlayment

(Available in West only)

- SBS-modified asphalt increases flexibility and provides long-lasting durability; up to 60 days exposure if necessary
- Fiberglass reinforced, so it lays flatter for a better-looking roof
- UL Classified for use with GAF Class A asphalt shingles
- ICC ES ESR-3283
- Meets or exceeds all physical properties of ASTM D226
- Up to a Lifetime Ltd. warranty when installed on Lifetime Shingle roofs[†]
- Approx: 2 squares/roll (216 gross ft²); length 65.8"; width 39.4"



[†]See footnote on previous page.

Cobra® Attic Ventilation



Choose From The Industry's Most Comprehensive Line Of Ridge Vents!



Cobra® Ridge Vents...

- Provide superior attic ventilation when properly installed with eave or soffit vents
- Work along the length of the roof's ridge to minimize temperature and equalize pressure inside the attic
- Allow a flow-through of fresh air to reduce damaging heat and moisture
- Pass the 110 mph wind-driven rain test (under controlled laboratory conditions)
- Up to a Lifetime Ltd. warranty when installed on Lifetime Shingle roofs†
- Carry a UL Class C fire rating, except Cobra® Exhaust Vent For Roof Ridge, which has a UL Class A rating
- Meet ASTM D1929
- Meet/pass Texas Department of Insurance, ICC, Miami-Dade, and Florida Building Code
- Include the EasyTear™ Sizing System, which allows you to hand-tear the vents in regular increments (except Cobra® Exhaust Vent For Roof Ridge)

5 Styles To Choose From!					
<i>Product Name</i>	Cobra® Exhaust Vent	Cobra® Ridge Runner™ Exhaust Vent	Cobra® Snow Country™ Exhaust Vent	Cobra® Rigid Vent 3™ Exhaust Vent	Cobra® Snow Country Advanced™ Exhaust Vent
<i>Description & Availability</i>	Roll-style vent, available in all climates	Rigid roll-style vent, available in all climates	Rigid-style vent, available in colder climates	Premium rigid-style vent, available in warmer climates	Premium rigid-style vent, available in colder climates
<i>Net Free Ventilating Area (NFVA)</i>	16.9 in ² (hand nail version) 14.1 in ² (nail gun version)	12.5 in ²	18.0 in ²	18.0 in ²	18.0 in ²
<i>Width(s) Available</i>	8" & 10.5", metric	11.5"	11.5"	9" & 11.5"	9" & 11.5"
<i>Nail Gunnable</i>	Yes (nail gun version)	Yes	No	No	No
<i>Length</i>	20' & 50' rolls	20' roll	4' sticks	4' sticks	4' sticks
<i>Nails Included?</i>	Yes	Yes	No	Yes	Yes
<i>Hand Tearable?</i>	No	Yes	Yes	Yes	Yes
<i>Weather Filter?</i>	N/A	Yes	Yes	No	Yes

Property Owner's Best Choice...

- **Lets The Beauty Of Your Home Stand Out...** Low profile design keeps Cobra® Ridge Vents virtually invisible when installed—to maintain an “uncluttered” look on your roof
- **Superior Construction...** All rigid-style Cobra® Vents are made with UV stable, high-impact co-polymers; Cobra® Roll-style Vent is made from UV stable, 100% recycled polyester composite fiber
- **Insect Guard...** Helps prevent problems with insect, bird, and animal infestation
- **Energy Efficient...** May even help to reduce utility usage
- **Integral Filter...** Helps resist snow infiltration in harsh winter climates (Cobra® Snow Country™, Cobra® Snow Country Advanced™, and Cobra® Ridge Runner™ Exhaust Vents only)
- **Cap Shingle Compatible...** Options available for 12", metric, and 10" width ridge cap shingles.

Cobra® FASCIAFLOW Premium Intake Ventilation

Product Specifications
 Size: 12' x 6" x 1.25"
 NFA: 9 In² per Lineal Ft.
 Construction: PVC
 49 Pieces/Pallet



Today's solution to a 100-year-old problem!

- Makes it easy to install intake ventilation on tough-to-vent homes by replacing existing fascia board
- Allows cool air to enter the attic space, driving warm and moist air out of the attic's exhaust vents
- Boosts the performance of existing soffit/undereave vents
- Designed with PVC for years of maintenance-free performance
- Miami-Dade County and Florida Building Code approved
- Up to a Lifetime Ltd. warranty when installed on Lifetime Shingle roofs†

†See footnote on next page



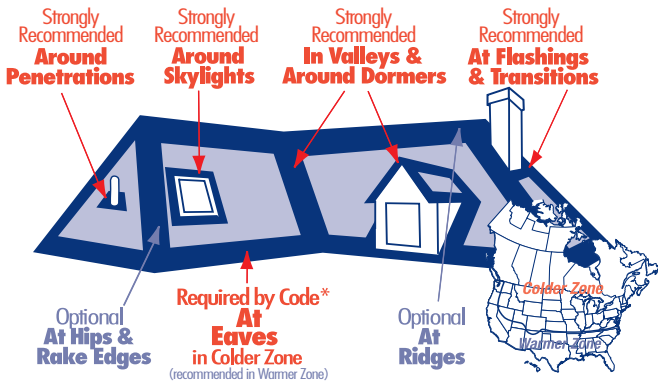
Waterproof Leak Barriers



Eave/Rake Starter Strips



“Protect Your Investment And Safeguard Vulnerable Areas”



*Check local building codes for specifications in your area.

- **Protect Your Property...** Help prevent wind-driven rain from leaking through the roof deck, or melting ice and snow (caused by ice dams in harsh winter climates) from leaking into property's interior
- **Add Extra Protection...** In valleys and at eave and rake edges—the most leak-prone areas of the roof. Strongly recommended for chronic problem areas like skylights, dormers, vent pipes, chimneys, and other flashing areas
- **Won't Leak...** Helps ensure a 100% watertight seal
- **Avoid Costly Repairs...** Due to staining on interior walls and ceilings
- **Better Appearance...** Fiberglass reinforcement helps resist wrinkling and buckling—lays flatter under shingles
- **Save Labor...** Split-back release film peels off in sections, for faster installation and superior property owner value
- **Peace Of Mind...** Up to a Lifetime Ltd. warranty when installed on Lifetime Shingle roofs†



SPECIFICATIONS (NOM.)

WEATHERWATCH® Mineral-Surfaced Leak Barrier

- Mineral surface & fiberglass reinforced
- UL Classified (see complete marking on product)
- ICC Evaluation Report ESR 1322
- Miami-Dade County approved
- Available nationwide
- Roll width is 36"
- Available in 1.5 & 2.0 square rolls
- Length of 1.5 square roll is 50'
- Length of 2.0 square roll is 66.7'
- Approx. area of 1.5 square roll is 150 ft²
- Approx. area of 2.0 square roll is 200 ft²

STORMGUARD® Film-Surfaced Leak Barrier

- Film surface & fiberglass reinforced
- High temperature design acceptable for use under metal roof systems
- UL Classified (see complete marking on product)
- ICC Evaluation Report ESR 1322
- Miami-Dade County approved
- Available nationwide
- Available in 2.0 square rolls
- Width is 36", length is 66.7'
- Approx. area of 2.0 square roll is 200 ft²

Ask your local Territory Manager about UnderRoof™2, UnderRoof™HT, and Weather Watch® XT premium performance Leak Barriers (available regionally).

! Many warranties for GAF and competitors require starter strips on both eave and rake for maximum wind coverage



- **Save Labor...** Provides a cost-effective alternative to using cut-up shingles as your starter strip
- **Help Prevent Blow-Offs...** Includes a high-quality, properly positioned factory-applied adhesive that will tightly lock your shingles in place
- **Easy To Install...** Pre-scored, no cutting needed
- **Maximum Wind Warranties...** Requires starter strips on rake and eaves
- **Peace Of Mind...** Up to a Lifetime Ltd. warranty when installed on Lifetime Shingle roofs†



WEATHERBLOCKER™ PREMIUM EAVE/RAKE STARTER STRIP

(Use with all shingles. 17" x 40" or splits to 8.5" x 40")

- Meets ASTM D3462*
- UL 790 Class A fire rated
- Available nationally

PRO-START™ STARTER STRIP SHINGLE

(Use with most standard English and metric-sized shingles. 13" x 38" or splits to 6.5" x 38")

- Meets ASTM D3462*
- UL 790 Class A fire rated
- Available nationally

* Periodically tested by independent and internal labs to ensure compliance with ASTM D3462 at time of manufacture. Test results obtained after manufacture will vary.

† See GAF Shingle & Accessory Ltd. Warranty for complete coverage and restrictions. The word "Lifetime" means as long as the original individual owner(s) of a single family detached residence (or the second owner(s) in certain circumstances) owns the property where the shingles and accessories are installed. For owners/structures not meeting above criteria, Lifetime coverage is not applicable. Lifetime Ltd. warranty on accessories requires the use of at least three qualifying GAF accessories and the use of Lifetime Shingles.

Ridge Cap Shingles



TIMBERTEX® Premium Ridge Cap Shingles



Specifications

- Fiberglass asphalt design
- Available in 12" width
- 8" exposure
- UL 790 Class A fire rated
- Meets ASTM D3161 Class F; ASTM D3018 Type I; and ASTM D3462*
- Miami-Dade County approved
- CSA-A123.5
- Florida Building Code approved
- ICC ES ESR-1475
- 150 pieces per 100 linear ft.; 5 bundles per 100 linear ft.
- Approx. 2 nails per piece



Available nationwide
(Check color availability with the nearest GAF sales office)

RIDGLASS® Premium Ridge Cap Shingles



Specifications

- Fiberglass asphalt design
- Available in 8" and 10" widths
- 8" exposure
- Meets ASTM D3161 Class A; ASTM D3018 Type I; and ASTM D3462*
- UL 790 Class A fire rated
- CSA-A123.5
- ICC ES ESR-1475
- 48 (8" & 10") pcs./box (one box covers 31 linear ft. of finished hip & ridge); 3.2 boxes cover approx. 100 linear ft.
- Approx. 2 nails per piece

(Available only in the Western area)

*Periodically tested by independent and internal labs to ensure compliance with ASTM D3462 at time of manufacture. Test results obtained after manufacture will vary.

†See GAF Shingle & Accessory Ltd. Warranty for complete coverage and restrictions.

†† See GAF Shingle & Accessory Ltd. Warranty for complete coverage and restrictions. The word "Lifetime" means as long as the original individual owner(s) of a single family detached residence (or the second owner(s) in certain circumstances) owns the property where the shingles and accessories are installed. For owners/structures not meeting above criteria, Lifetime coverage is not applicable. Lifetime Ltd. warranty on accessories requires the use of at least three qualifying GAF accessories and the use of Lifetime Shingles.



! Important Warning: GAF Ridge Cap Shingles are designed to complement the color of your GAF laminated shingles. But some contractors cut costs by using the tabs from a 20-year or 25-year 3-tab shingle as your ridge cap. To ensure the closest color consistency for your roof, ask your contractor to use genuine GAF Ridge Cap Shingles!

for PROPERTY OWNERS

- **Perfect Finishing Touch...** Extra-thick, double-layer design with massive 8" exposure is 195% thicker than strip shingles for a distinctive, upscale look
- **The Right Colors...** Designed to complement the color of your roof's shingles (unlike using cut-up 3-tab shingles)
- **Stays In Place...** Dura Grip™ Self-seal Adhesive seals each piece tightly and reduces the risk of shingle blow-off
- **StainGuard Ltd. Warranty...** Helps assure the beauty of your roof against unsightly blue-green algae†
- **Peace Of Mind...** Up to a Lifetime Ltd. warranty when installed on Lifetime Shingle roofs††

for PROFESSIONALS

- **Versatile...** 12" wide design fits over most ridge vents
- **Easier To Install...** Newly-improved pre-scored design with large 8" exposure means no cutting on the roof—and fewer pieces to install
- **Highest Quality...** Made with special, polymer-modified asphalt, so layers are sturdy and strong, yet bend easily to hug the ridge line

for PROPERTY OWNERS

- **Incredible Appearance...** Unique, ultra-high profile design is 382% thicker than strip shingles—to enhance the natural beauty of your home by sharply framing the roof line
- **Special Design...** Created for the unique architectural style of homes in the western U.S.
- **The Right Colors...** Designed to complement the color of your roof's shingles
- **Stays In Place...** Dura Grip™ Self-seal Adhesive seals each piece tightly and reduces the risk of shingle blow-off
- **Peace Of Mind...** Up to a Lifetime Ltd. warranty when installed on Lifetime Shingle roofs††

for PROFESSIONALS

- **Ready To Install...** Patented, pre-folded design with 8" exposure means no costly cutting or folding on the roof
- **Saves Time...** Fewer pieces to apply allows you to offer greater customer value
- **Highest Quality...** Special SBS polymer-modified asphalt helps prevent cracking and peeling during installation

†, ††: See footnotes on previous page

SEAL-A-RIDGE®
Ridge Cap Shingles



(Available only in Eastern, Southern, and Central areas)

Specifications

(Standard Seal-A-Ridge®)

- Fiberglass asphalt design
- 6 2/3" exposure
- Approx. 12" wide
- UL 790 Class A fire rated
- Miami-Dade County approved
- Florida Building Code approved
- Meets ASTM D3462*
- ICC ES ESR-1475
- 4 bundles cover approx. 100 linear feet
- Approx. 2 nails per piece
- Up to a Lifetime Ltd. warranty when installed on Lifetime Shingle roofs††



(Seal-A-Ridge® ArmorShield™ and Seal-A-Ridge® IR)

- Fiberglass asphalt design with FLX™ formula
- UL 2218 Class IV impact resistant
- 5" exposure
- Approx. 12" wide
- UL 790 Class A fire rated
- Meets ASTM D3462*
- ICC ES ESR-1475
- 4 bundles cover approx. 100 linear feet
- Approx. 2 nails per piece
- Up to a Lifetime Ltd. warranty when installed on Lifetime Shingle roofs††

Z® RIDGE *(Available only in the Southwestern and Western areas)*
Ridge Cap Shingles



Specifications

- Fiberglass asphalt design
- 5 5/8" exposure
- Approx. 10" wide
- UL 790 Class A fire rated
- Meets ASTM D3018 Type I, ASTM D3161 Class A, and ASTM D3462*
- ICC ES ESR-1475
- 3 bundles cover approximately 100 linear feet
- Up to a Lifetime Ltd. warranty when installed on Lifetime Shingle roofs††

ROYAL SOVEREIGN®

THREE-TAB SHINGLES



Color Shown:
Weathered Gray

SHINGLE & ACCESSORY LTD. WARRANTY
25 Years
LTD. WARRANTY TERM

for HOMEOWNERS

- **Homeowner Favorite...** In a recent blind comparison test, homeowners preferred the look of Royal Sovereign® to any other 3-tab shingle.
- **Proven Quality...** Over 10 billion Royal Sovereign® Shingles have been installed in North America—enough to circle the Earth more than 200 times if they were laid end to end!
- **Advanced Protection® Technology...** Minimizes the use of precious natural resources while providing superior protection for your home (visit www.gaf.com/aps to learn more).
- **Looks Great...** Color Lock™ ceramic firing process (similar to fine china) maintains true color longer.
- **Stays In Place...** Passes the industry's two toughest wind tests: ASTM's 110 mph and 150 mph wind tests (under controlled laboratory conditions).
- **Superior Performance...** Extra-strong Micro Weave® Core provides longer life and extended durability.
- **Safer...** Class A fire rating from Underwriters Laboratories—the highest rating possible.
- **Great For Resale...** Long-lasting beauty increases your home's resale value.
- **Peace Of Mind...** 25-year ltd. transferable warranty with Smart Choice® Protection (non-prorated material and installation labor coverage) for the first five years.¹

¹ See GAF Shingle & Accessory Ltd. Warranty for complete coverage and restrictions.

"Attractive, Value-Priced Shingle
Featuring GAF's Well-Known Quality"



Choosing The Best-Looking Shingle For Your Home

Some people think all strip shingles look pretty much alike. Not so! At GAF, we've gone to great pains to make Royal Sovereign® the most beautiful strip shingle you can install.

But don't just take our word for it. GAF asked an independent research firm to survey homeowners about whose 3-tab shingles they preferred. The result: More homeowners preferred the look of Royal Sovereign® Shingles to the other leading brands! And the #1 reason cited by homeowners? Royal Sovereign's color blends.

Here's just a sampling of what these real homeowners said about Royal Sovereign® Shingles:

"It has more vivid color, it is a more vibrant color... not faded."

"...looks clean, looks classier."

"Looks more natural [than the others] because of the colors."

"...stands out better than the other ones, I like the color, it is brighter."



"It looks rich and very durable."



ROYAL SOVEREIGN® THREE-TAB SHINGLES

(Not available in Canada. For information about Marquis® Weather Max® 3-tab Shingles, which are available in Canada, visit www.gaf.com.)

Most Popular Colors



Regional Colors



Note: Color availability subject to change without notice.



Color Availability Chart

Ask your contractor which GAF plant supplies the Royal Sovereign® Shingles in your area. Or visit www.gaf.com for the most current color availability information for your area.

	Dallas, TX	Fontana, CA	Minneapolis, MN	Mobile, AL	Mt. Vernon, IN	Myerstown, PA	Pacific Northwest	Savannah, GA	Tampa, FL
Most Popular Colors:									
Autumn Brown	•		•	•	•	•		•	•
Charcoal	•	•	•	•	•	•		•	•
Golden Cedar	•	•	•	•	•	•	•	•	•
Silver Lining	•	•	•				•	•	•
Weathered Gray	•	•	•	•	•	•		•	•
White ¹	•	•	•		•	•		•	•
Regional Colors:									
Ash Brown	•			•					
Cypress Tan									•
Desert Sand		•							
Harvest Brown		•							
Nickel Gray			•	•	•	•			
Russet Red									•
Sandriff									•
Slate	•	•		•		•		•	
Stone Gray		•					•		
Summer Sage		•							



Note: Available in some areas

¹ ENERGY STAR® Qualified (U.S. Only). In the Fontana, CA service area, this shingle meets the prescriptive requirements of Title 24, Part 6, of the California Code of Regulations and is rated by the Cool Roof Rating Council (CRRC).

Note: It is difficult to reproduce the color clarity and actual color blends of these products. Before selecting your color, please ask to see several full-size shingles.



Master Flow® Ventilation Products



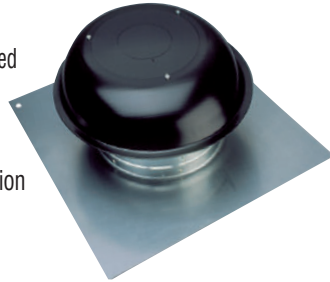
Excludes WeatherSide™ Fiber-Cement Siding

Power Vents



Investing in a Master Flow® Roof Mount Power Vent increases the overall comfort of your home, helps reduce the cost of air conditioning and wear on the system, minimizes heat/moisture damage to roof and attic, and helps fight mold and mildew. Master Flow® Power Ventilators feature:

- UL Listed and Miami-Dade County approved (select models)
- Large flashing for easy installation
- Automatic thermostat, available with humidistat/thermostat control as an option
- Built-in thermal protection for safety



Whole House Fans



Master Flow® Whole House Fans help the property owner beat the heat and reduce air conditioning costs by forcing out hot air and bringing in cooler outside air.

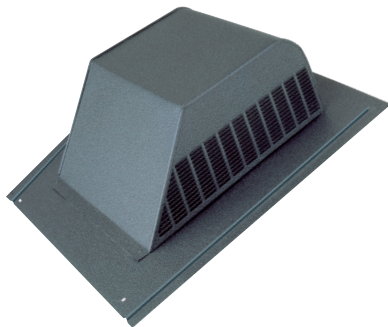
- UL listed
- Ceiling shutter included
- Backed with 5- or 10-year ltd. warranties*

Roof Louvers



(select models)

The Master Flow® line offers one of the broadest assortments of “energy free” products in the industry. Roof louvers, wall louvers, ridge vents, chimney caps, foundation vents, under-eave vents, and roof jacks, all in a large assortment of materials and colors, to meet every need.



Turbines



(select models)

The Master Flow® line offers the finest “energy free” attic ventilators. Dual bearing turbines are:

- Backed by a Lifetime ltd. warranty**
- Internally or externally braced; 12" and 14" sizes
- Available in a large assortment of colors
- Miami-Dade County approved without storm caps! (select models)



* See Master Flow® Powered Ventilation Products Ltd. Warranty for complete coverage and restrictions.

** See Master Flow® Non-Powered Ventilation Products Ltd. Warranty for complete coverage and restrictions. The word “Lifetime” means as long as the original owner of the turbines (or the second owner in certain circumstances) owns the property where the turbines are installed. For owners not meeting above criteria, Lifetime coverage is not applicable.

Solar-Powered Vents

The ultimate in energy-saving power vents, Master Flow® Solar Power Vents use the sun’s energy to remove damaging heat and moisture from your attic.

- Equipped with a brushless motor that requires no maintenance
- Available as 100% solar powered or dual solar/AC powered
- 100% solar-powered unit requires no electrical wiring or electricians
- Dual-powered unit runs at night or when the sun is not out; requires 80% less electricity than conventional power vents (when running on house power)
- 500 CFM Max (Solar); 750 CFM Max (AC power)
- Fully adjustable solar panel for optimal solar exposure
- Backed by a 5-year ltd. warranty with 2-year labor protection plus plan*
- Miami-Dade County approved (select models)



“Also Available In Gable Mount!”

Fiber-Cement Siding

WeatherSide™

FIBER-CEMENT SIDING

“The One And Only Solution For Repairing Asbestos Siding”

- **Perfect Design...** Virtually identical in size and shape to millions of old non-existent asbestos siding shingles installed over the last 60 years
- **Avoid Hassles & Expenses...** Great for repairing or matching damaged asbestos siding shingles without the expense of new siding for the whole house
- **Safe...** WeatherSide™ Fiber-Cement Siding contains NO asbestos
- **Easy Installation...** After properly removing the old siding*, simply nail the WeatherSide™ siding in place and paint
- **Pre-Primed...** Ready to be painted to match the existing wall color
- **Meets Code...** Florida Building Code approved and Texas Department of Insurance listed



Purity™ Shingle

- Textured surface with Straight, Wavy, or Thatched edge
- Size: 12" x 24"



Profile Shingle

- Striated surface with straight edge
- Sizes: 9" x 32", 12" x 24" or 14 5/8" x 32"



Emphasis™ Shingle

- Extra-thick wood grain surface with Thatched edge
- Size: 14 5/8" x 25 1/2"



Matching Accessories Available...

- Siding Backer Strips (9", 12", and 14")
- Hot-dipped galvanized Siding Nails
- Pre-Primed Individual Corners (9", 12", 14", and Emphasis™ Corners)

*We recommend that any removal and disposal of asbestos-containing products be done by a professionally trained asbestos removal contractor.



Fiberglass Asphalt Shingle Specifications*

				WARRANTY ²	APPROXIMATE PHYSICAL ATTRIBUTES				
					Pieces/Square	Bundles/Square	Nails/Square ⁶	Exposure	Dimensions
ULTRA-PREMIUM COLLECTION LIFETIME DESIGNER SHINGLES	Camelot®			Lifetime LTD. WARRANTY TERM	56	7	280	7.5"	17" x 34½"
	Country Mansion®			Lifetime LTD. WARRANTY TERM	48	6	192	7.5"	17" x 40"
	Grand Canyon®			Lifetime LTD. WARRANTY TERM	72	6	360	5"	17" x 40"
VALUE COLLECTION LIFETIME DESIGNER SHINGLES	Grand Sequoia®			Lifetime LTD. WARRANTY TERM	72	5	360	5"	17" x 40"
	Woodland®			Lifetime LTD. WARRANTY TERM	56	4	280	6.5"	17" x 40"
	Monaco®			Lifetime LTD. WARRANTY TERM	48	3	240	7.5"	17" x 40"
	Camelot® II			Lifetime LTD. WARRANTY TERM	56	4	280	7.5"	17" x 34½"
	Country Mansion® II			Lifetime LTD. WARRANTY TERM	48	4	192	7.5"	17" x 40"
	Sienna™			Lifetime LTD. WARRANTY TERM	64	4	256	5.5"	17¾" x 40"
	Slateline®			Lifetime LTD. WARRANTY TERM	48	3	288	7.5"	17" x 40"
SPECIALTY LIFETIME SHINGLES	Timberline® Cool Series			Lifetime LTD. WARRANTY TERM	64	3	256	5½"	13¼" x 39¾"
	Timberline® ArmorShield™ II			Lifetime LTD. WARRANTY TERM	64	3	256	5½"	13¼" x 39¾"
	Grand Sequoia® IR			Lifetime LTD. WARRANTY TERM	72	4	360	5"	17" x 40"
TIMBERLINE® LIFETIME SHINGLES	Timberline Ultra HD®			Lifetime LTD. WARRANTY TERM	64	4	256	5½"	13¼" x 39¾"
	Timberline® American Harvest®			Lifetime LTD. WARRANTY TERM	64	3	256	5½"	13¼" x 39¾"
	Timberline HD®			Lifetime LTD. WARRANTY TERM	64	3	256	5½"	13¼" x 39¾"
	Timberline® Natural Shadow®			Lifetime LTD. WARRANTY TERM	64	3	256	5½"	13¼" x 39¾"
3-TAB SHINGLES	Royal Sovereign®			25 Years LTD. WARRANTY TERM	79 Eng 64 Metric	3	316 Eng 256 Metric	5" Eng 5½" Metric	12" x 36" Eng 13¼" x 39¾" Metric



* For the current specifications on TruSlate®, which is genuine slate (not an asphalt shingle), visit www.gaf.com.

¹ Periodically tested by independent and internal labs to ensure compliance with ASTM D3462 at time of manufacture. Test results obtained after manufacture will vary.

² All shingles with a Lifetime Ltd. warranty also have a 110 mph wind warranty. However, if the shingles are (a) installed with six nails per shingle and (b) installed using GAF starter strip products installed at the eaves and rakes, the wind speed coverage is 130 mph. The word "Lifetime" means as long as the original individual owner(s) of a single family detached residence [or the second owner(s) in certain circumstances] owns the property where the shingles are installed. For owners/structures not meeting above criteria, Lifetime coverage is not applicable. See GAF Shingle & Accessory Limited Warranty for complete coverage and restrictions.

Accessory Paint

SHINGLE MATCH™



GAF ShingleMatch™ Roof Accessory Paint will help to hide unsightly protrusions on the roof, including vent pipes, exhaust vents, and flashings.

PRODUCT SPECIFICATIONS

Can Size: 12 oz.
Cans Per Case: 6
Cases Per Pallet: 128

Colors:

Barkwood, Birchwood, Charcoal, Driftwood, Fox Hollow Gray, Hickory, Hunter Green, Mission Brown, Pewter Gray, Shakewood, Slate, and Weathered Wood



FIRE	WIND	CODES								SPECIAL FEATURES		
		NATIONAL			REGIONAL					Press: UL 2218, Class 4 Impact Test	ENERGY STAR® (U.S. Only)	Cool Roof Rating Council
		Rated Class A Fire-UL 790	Press: ASTM D7138, Class H	ASTM D31161 Type 1, Class F	ASTM D3018 Type 1	ASTM D3462 1	CSA-A123.5	Miami-Dade County Approved	Florida Building Code Approved			
•	•	•	•	•	•	•	•	•	•			
•	•	•	•	•	•	•	•	•	•			
•	•	•	•	•	•	•	•	•	•			
•	•	•	•	•	•	•	•	•	•			
•	•	•	•	•	•	•	•	•	•			
•	•	•	•	•	•	•	•	•	•			
•	•	•	•	•	•	•	•	•	•			
•	•	•	•	•	•	•	•	•	•			
•	•	•	•	•	•	•	•	•	•			
•	•	•	•	•	•	•	•	•	•			
•	•	•	•	•	•	•	•	•	•		•	•
•	•	•	•	•	•	•	•	•	•			
•	•	•	•	•	•	•	•	•	•		•	
•	•	•	•	•	•	•	•	•	•			
•	•	•	•	•	•	•	•	•	•			•
•	•	•	•	•	•	•	•	•	•			
•	•	•	•	•	•	•	•	•	•			
•	•	•	•	•	•	•	•	•	•			
•	•	•	•	•	•	•	•	•	•			
•	•	•	•	•	•	•	•	•	•			
•	•	•	•	•	•	•	•	•	•			
•	•	•	•	•	•	•	•	•	•		•	•
•	•	•	•	•	•	•	•	•	•			
•	•	•	•	•	•	•	•	•	•			
•	•	•	•	•	•	•	•	•	•			
•	•	•	•	•	•	•	•	•	•			
•	•	•	•	•	•	•	•	•	•			

3 StainGuard® Protection available in some areas.
 4 Applies to some plants (that make referenced product).
 5 Applies to white only.
 6 Steeper slopes and maximum wind warranties may require more nails.
 7 Applies to product sold in Canada only.

Self-Adhering Low-Slope Roofing Systems



"Perfect For Porches, Garages,
Car Ports, And Sunrooms!"



LIBERTY™

SBS Self-Adhering Roofing System

- **Safer...** Self-adhering membrane system eliminates the need for open flames, torches, kettles, or dangerous chemicals
- **No Fumes...** Unlike conventionally applied systems, eliminates the fumes and odors caused by hot asphalt or solvent-based adhesives
- **Proven Technology...** Based on the same technology used in GAF's commercial roofing systems—proven in the field for decades!
- **Quicker Installation...** Often 1/3 faster than conventional systems, with minimal set-up or clean-up time
- **No Extra Tools...** No need to stage extra equipment
- **Free Ltd. System Warranty...** against material defects for up to 15 years*
- **Extended Guarantees Available...** Optional full-system guarantees against manufacturing defects and workmanship errors available for up to 20 years**
- **7 Popular Colors...** To complement your Timberline® Series or other residential shingle roof

Liberty™ Base/Ply Sheet Specifications (nom.)

- Roll length is 66 ft. (20.1 m)
- Roll width is 39.375 in. (1.0 m)
- Roll size is 2 squares, 216 sq. ft. (20.1 m²)
- FM approved, UL classified, State of Florida approved, Miami-Dade County approved, Texas Department of Insurance listed

Liberty™ Cap Sheet Specifications (nom.)

- Roll length is 34 ft. (10.4 m)
- Roll width is 39.375 in. (1.0 m)
- Roll size is 1 square, 112 sq. ft. (10.4 m²)
- FM approved, UL classified, State of Florida approved, Miami-Dade County approved, Texas Department of Insurance listed

Liberty™ MA Nailed Base Sheet Specifications (nom.)

- Roll length is 66 ft. (20.1 m)
- Roll width is 39.375 in. (1.0 m)
- Roll size is 2 squares, 216 sq. ft. (20.1 m²)
- FM approved, UL classified, State of Florida approved, Miami-Dade County approved

*See Liberty Limited Warranty On SBS Materials for complete coverage and restrictions.
**See System Pledge™ Roof Guarantee and Ruberoid®/GAFGLAS® Diamond Pledge™ NDL Roof Guarantee for complete coverage and restrictions.

Please Note: These blended colors are designed to complement your shingles, not to be an exact match. Because of the small size of these samples, it is difficult to reproduce the actual color effect. Please be sure to see a full-size roll before making a final color selection.

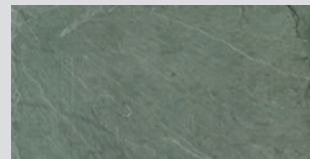


TruSlate®

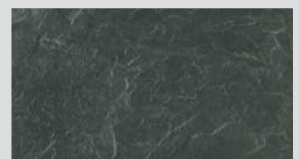
"THE AFFORDABLE GENUINE SLATE"

- **Genuine Hand-Split Quarried Slate...** Not a synthetic imitation
- **Stunningly Beautiful...** Helps differentiate your property and increases curb appeal
- **Affordably Priced...** Often comparable to the cost of a plastic imitation, tile, or metal
- **Superior Quality & Performance...** Meets ASTM C406 S1-Grade and virtually all national and regional building codes
- **Lifetime Ltd. System Warranty*...** When installed by a GAF Certified SlateCrafter™ Specialist

*See TruSlate® Smart Choice® Ltd. Warranty and TruSlate® Ultimate Pledge™ Ltd. Warranty for complete coverage and restrictions. The word "Lifetime" means as long as you, the original owner(s) [or the second owner(s) if coverage was properly transferred within the first 15 years] own the property where the TruSlate® Premium Roofing System is installed.



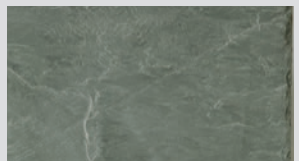
Meadow Green



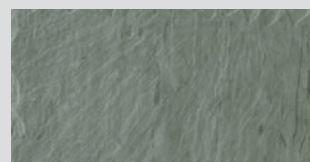
Onyx Black



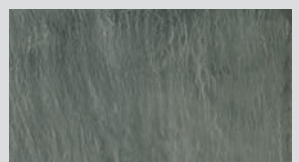
Charcoal



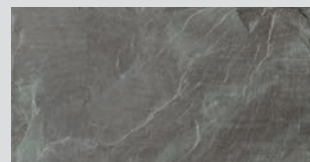
Mystic Grey



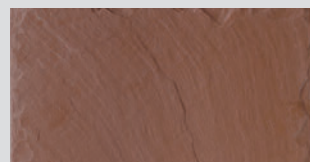
Autumn Dusk



Greystone



Antique Purple



Rustic Red

truslate.com

Note: Due to the inherent variability in natural slate (as well as the limitations of the commercial printing process), the actual color and texture of your TruSlate® roof will vary from that shown in this catalog.

Finally...Affordable **Genuine Slate** Offered In Two Exclusive Collections



Color Shown:
100% Meadow Green



Color Shown:
100% Greystone





CELEBRATING OVER 125 YEARS OF EXCELLENCE!

Advanced Quality

Professional installers have long preferred the rugged, dependable performance that only a GAF roof can offer, and have made our Advanced Protection® Shingles the #1 brand in North America!

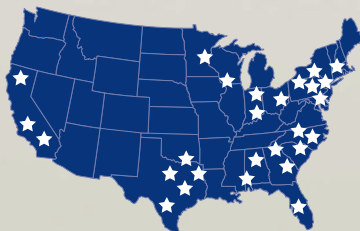


- Inventors of the **Timberline®** Advanced Protection® Shingle—the #1-selling shingle in North America
- Rated **#1** in shingle quality by contractors and home builders
- Named **#1 in innovation** for shingles and ridge ventilation by **home builders**
- Named **most-recommended** brand by upscale remodelers
- First to pass ASTM D3161 Class F (110 mph) and ASTM D7158 Class H (150 mph) wind ratings on every manufactured shingle (per UL public listing)
- First to produce an energy-efficient asphalt shingle available in rich colors, called the **Cool Color Series** (now called **Timberline® Cool Series**)

Expertise You Can Count On

We've been at this for over 125 years. Why turn to anyone else to protect your most valuable asset?

- Manufacturing locations **across North America**—to serve you better



- C.A.R.E. installation training program that has provided education to over **125,000 industry professionals**
- Regularly sought out to appear in leading **home and garden** publications and on home improvement networks such as **HGTV**



2 0 1 3



Solutions Made Simple

Getting a new roof shouldn't be an exercise in pain and frustration. So we've made it easy!

- Our **GAF Lifetime Roofing System** includes everything you need to provide reliable, water-tight protection for your home
- Our factory-certified contractors—more than **5,000 strong nationwide**—eliminate the risk that your roof will be installed by some fly-by-night contractor
- Our industry-leading warranties—**backed by North America's largest roofing manufacturer**—will provide you with the peace of mind you deserve



GAF Proudly Sponsors "The All-American Home" Campaign www.theallamericanhome.com

Quality You Can Trust...From North America's Largest Roofing Manufacturer!™

gaf.com

SALES OFFICES:
NORTHEAST
717-866-8392

CENTRAL
630-296-1980

SOUTHEAST
813-829-8880

SOUTHWEST
972-851-0500

WEST
800-445-9330

WORLD HEADQUARTERS:
973-628-3000

